



Bradford District Care
NHS Foundation Trust

Sustainability and IPC

Emma Clarke

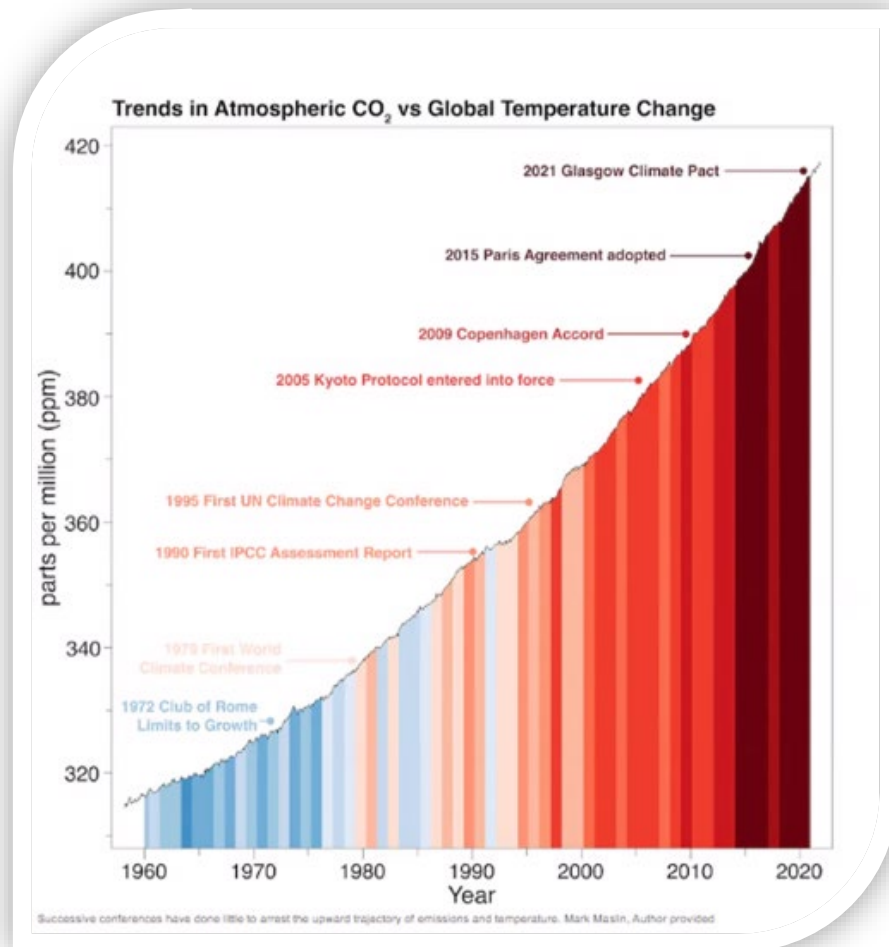
IPC in a Mental
Health Setting

28 April 2026

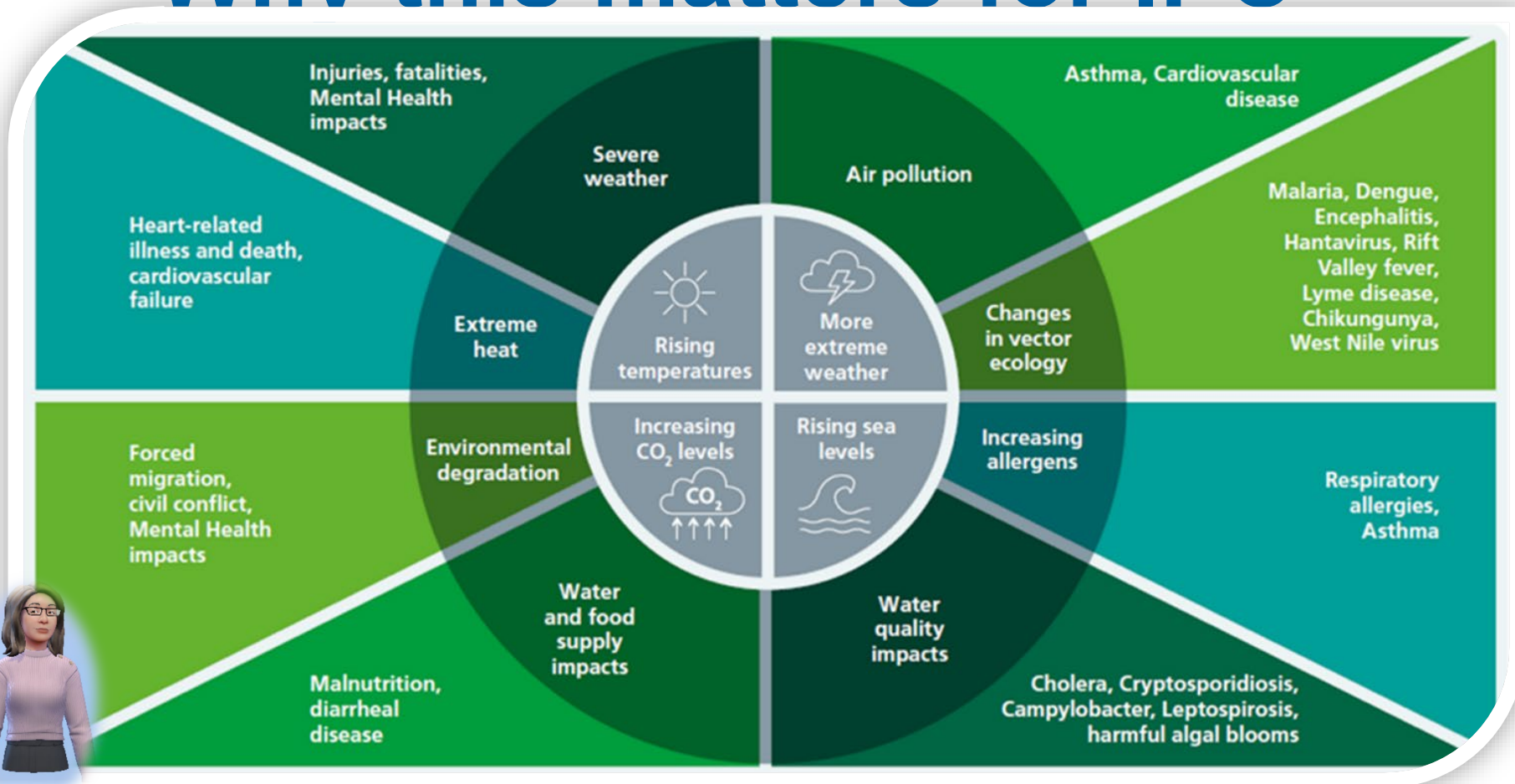


What do we mean by sustainability?

- Safe care today, without harming health tomorrow
 - Protecting patients, staff and communities
 - Designing safer, more resilient systems
- Financially sustainable



Why this matters for IPC





Bradford District Care
NHS Foundation Trust

National direction & professional guidance

- NHS Net Zero commitments include mental health – included in the 2022 Health and Social Care Act
- Sustainability embedded in Green Plans
- RC Psych Net Zero guidance

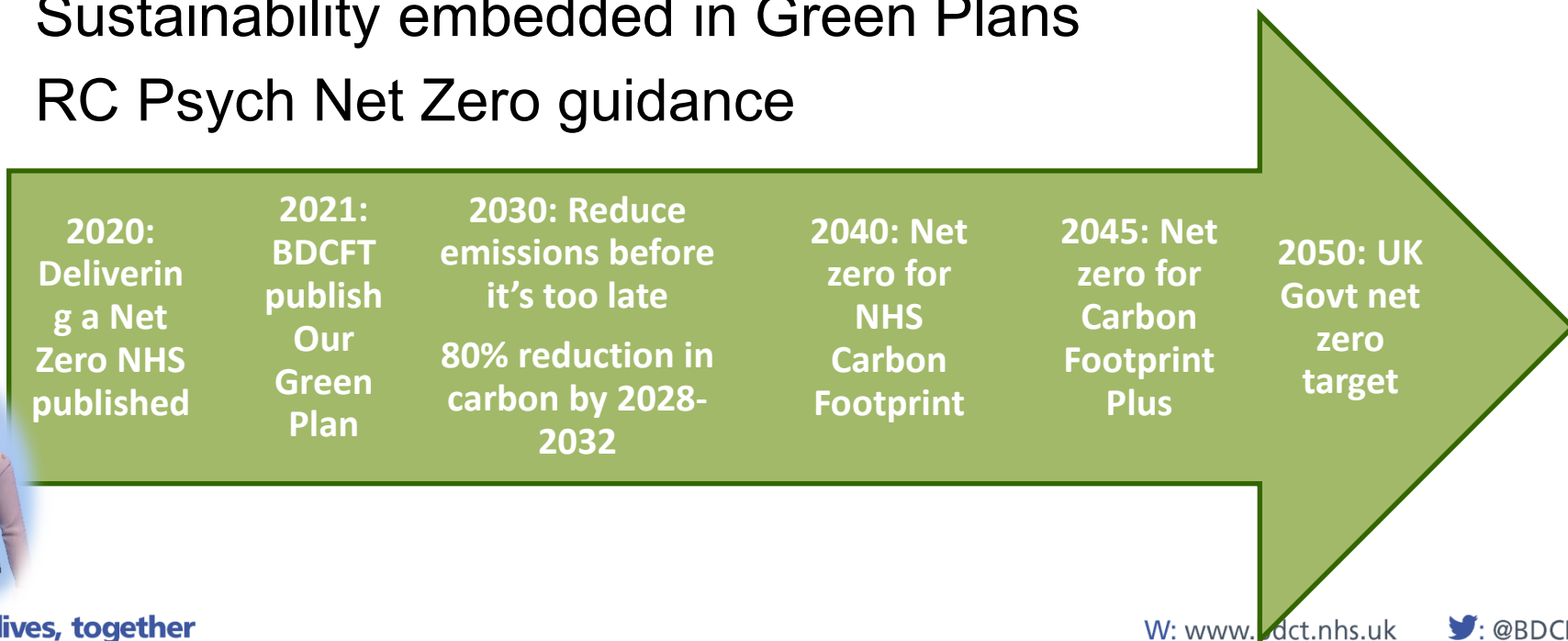
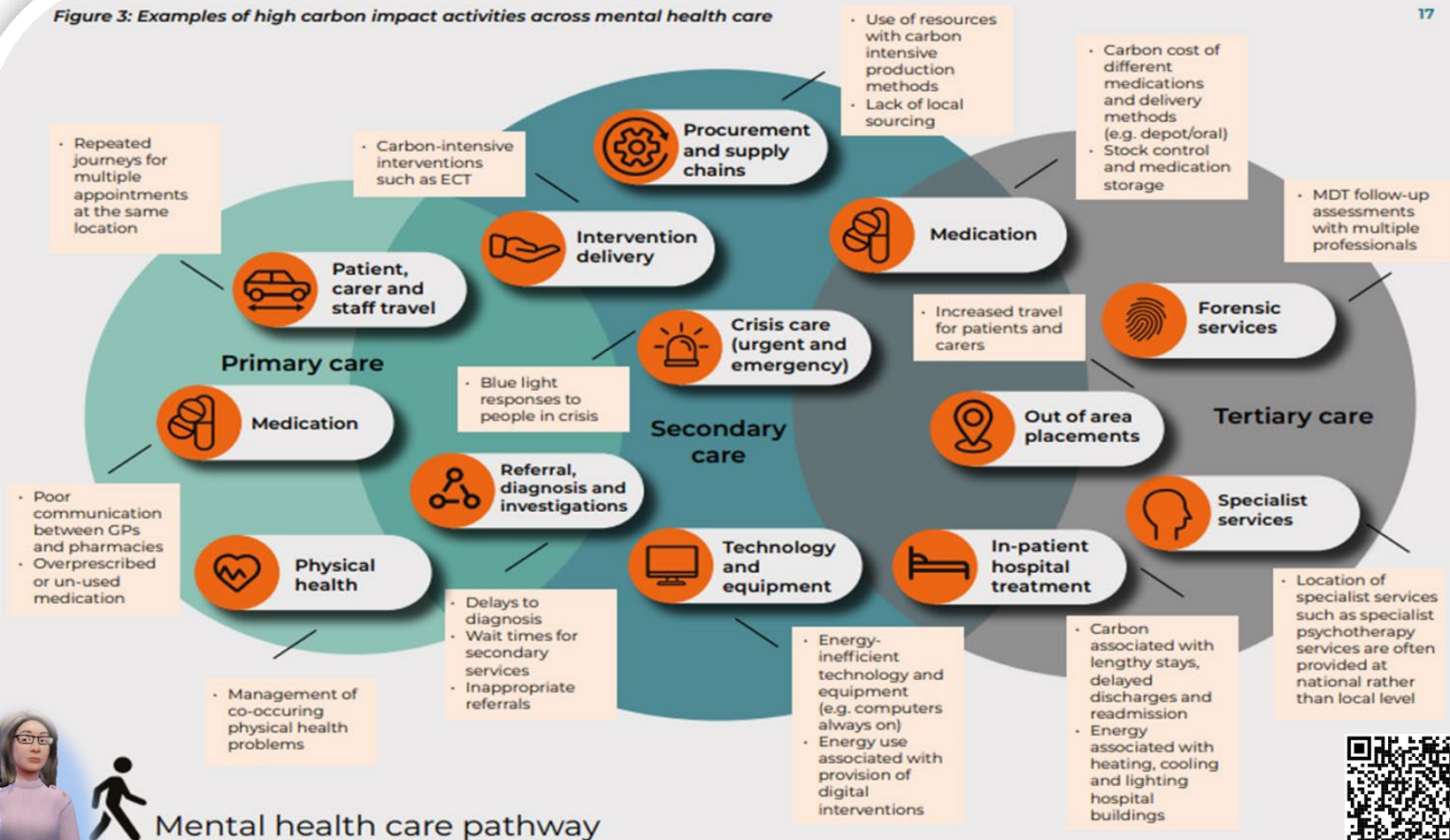


Figure 3: Examples of high carbon impact activities across mental health care

17



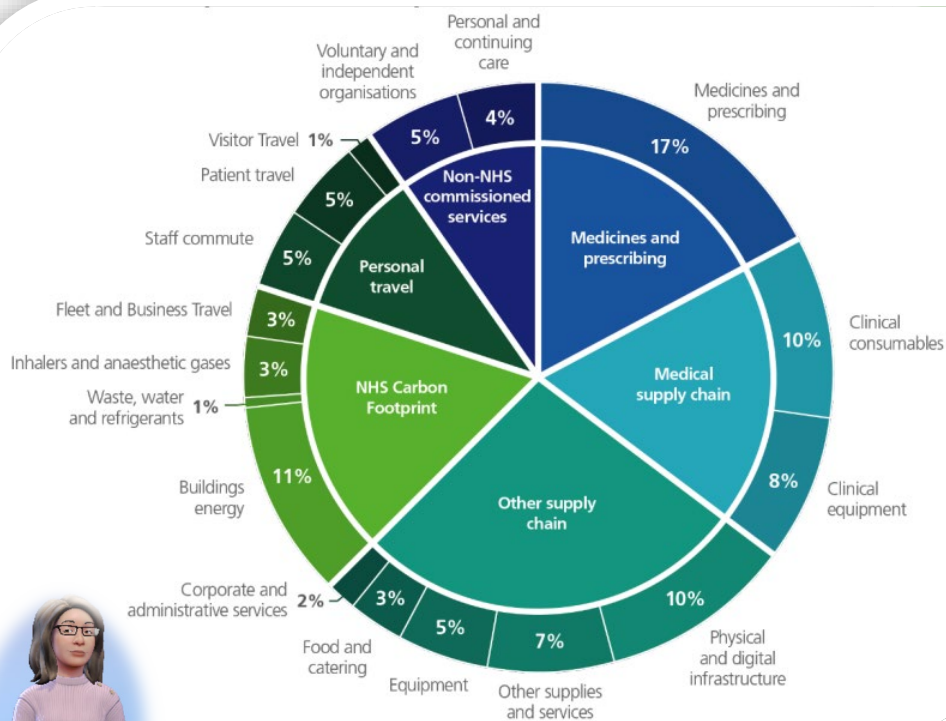
Mental health care pathway





Bradford District Care
NHS Foundation Trust

IPC and sustainability: shared goals



		Acute	Ambulance	Community	Mental health & learning disability	Primary care	Commissioners
NHS Carbon footprint	Building energy	●	●	●	●	●	●
	Waste, water and refrigerants	●	●	●	●	●	●
	Inhalers	●	●	●	●	●	●
	Anaesthetic gases & nitrous oxide	●	●	●	●	●	●
	Fleet and Business Travel	●	●	●	●	●	●
Medicines and prescribing	Medicines and prescribing	●	●	●	●	●	●
	Medicines and prescribing	●	●	●	●	●	●
Non-NHS commissioned services	Voluntary and independent organisations	●	●	●	●	●	●
	Personal and continuing care	●	●	●	●	●	●
Medical supply chain	Clinical consumables	●	●	●	●	●	●
	Clinical equipment	●	●	●	●	●	●
Other supply chain	Physical and digital infrastructure	●	●	●	●	●	●
	Other supplies and services	●	●	●	●	●	●
	Equipment	●	●	●	●	●	●
	Food and catering	●	●	●	●	●	●
Personal travel	Corporate and administrative services	●	●	●	●	●	●
	Staff commute	●	●	●	●	●	●
	Patient travel	●	●	●	●	●	●
Personal travel	Visitor Travel	●	●	●	●	●	●
	Visitor Travel	●	●	●	●	●	●





BDCFT case studies: Ventilation, energy & waste

- Ventilation and indoor air quality
- Energy efficiency
- Waste segregation and reduction (challenging over-classification)





Bradford District Care
NHS Foundation Trust

BDCFT case studies: Medicines, cleaning & hydration

- Supporting antimicrobial stewardship (Regional AMR group, antibiotic reviews)
- Green Pharmacy award
- Review of cleaning products and chemical exposure
- Hydration strategies that reduce UTI

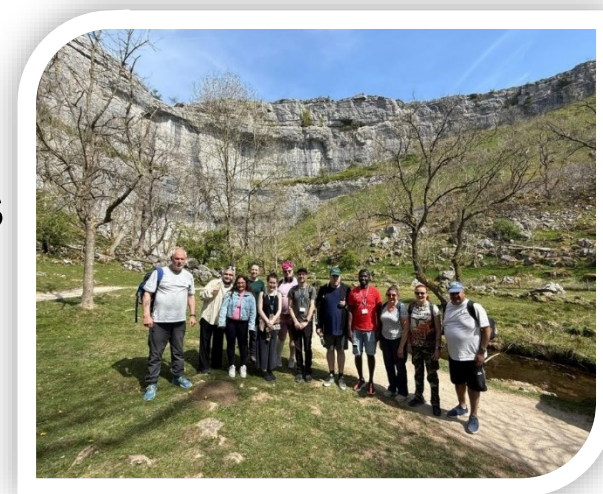




Bradford District Care
NHS Foundation Trust

Sustainability is more than carbon reduction

- Antimicrobial resistance
- Air pollution and indoor air quality
- Modern slavery in supply chains
- Biodiversity and access to nature
- Social value and health inequalities
- Climate change adaptation



better lives, together

W: www.bdct.nhs.uk

Twitter: @BDCFT

What can IPC teams do?

Your influence matters

- Link with sustainability lead
- Use Green Plans
- Embed sustainability in training
- Be curious – ask questions, talk about it, add to agendas

Identify one change...then the next.





Take home messages

IPC is an enabler of sustainable care

- Safe care and sustainable care align
- IPC expertise is essential
- Collaboration is key
- The NHS' Carbon Footprint 24-25 was 27.3m t/CO₂e – the equivalent of a small country
- 22 May...UK overshoot day



Footprint Network 2026, www.overshootday.org and www.footprintnetwork.org.



Bradford District Care
NHS Foundation Trust

- Thank you for listening, please scan the QR code for a summary and ideas you can take forward.

Emma

